

Rimsky-Korsakov — Scheherazade, Op. 35

Oboe I.

II.

**Lento. Recit.** **Andantino.** **Solo**  
Viol. Cad. 20 *rit. dolce ed espressivo assai*

*express. molto*

*a piacere*

**ten. B poco più mosso** **C a tempo, un poco più animato**  
*rit. assai a tempo giusto* *f* *p* *sf* *f*

*più tranqu. dolce* **Solo**

*accel.* *cresc.* **Recit.**

**D Allegro molto. Molto moderato. Tempo giusto. (Allegro molto)**  
*rit.* *f dim.* *pp mon.* *colla parte*

**Recit. Molto moderato.** **E Allegro molto.** **G.P.** 27

*lunga* *lunga* *mar.* *f dim.* *p* *f* **Recit. Moderato assai.**

*Colla parte* *Colla parte*

**Tempo giusto. (Allegro molto.)** **G** **Tromba (B)**  
*a tempo* *rit. a tempo* *rit.* *f* *f* *f* *f*

*Cad. ad lib.* *Cad. ad lib.* *1* *2* *3* *4*

**Vivace scherzando.** *pp* *cresc.* *p* *pp*

*pp* *cresc. poco* *11*

# LA SCALA DI SETA

Oboe I

G. Rossini

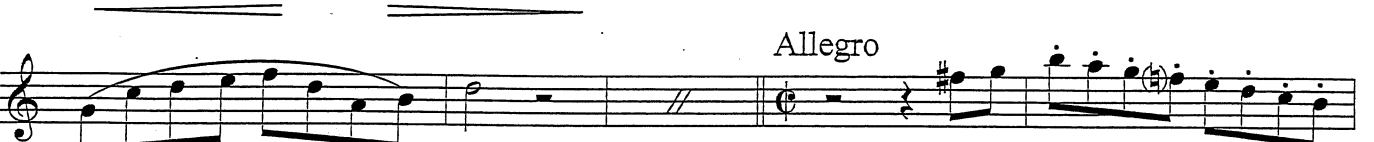
Andantino



*p dolce*



*p*



Allegro

*p*



Brahms — Violin Concerto in D Major

Oboe I

Adagio

Fag. Tutti Hr. (Solo)

*p dolce*

8

13 Ob.II *p* *dim.*

20 *p*

28 *mf* *p* Solo 11 Solo-Viol.

# Mendelssohn — Symphony No. 3

## OBOE I

Vivace non troppo.

1 20 Clar. in E 2 2 2 A

34 *f* *cresc.* *f*

44 *f* *cresc.* *ff*

57 *f* *f* *f* *f* *f*

66 B 15 *f* *pp* *f* *p* C

89 *p* *pp*

95 *pp* 11

Detailed description: This is a page of a musical score for Oboe I from Mendelssohn's Symphony No. 3. The tempo is marked 'Vivace non troppo.' The score is written in a single staff with a treble clef and a key signature of one flat (B-flat major). The time signature is 2/4. The page contains seven staves of music, numbered 1, 34, 44, 57, 66, 89, and 95. The music features a variety of dynamics, including fortissimo (f), fortissimo crescendo (f cresc.), fortissimo (ff), piano (p), piano piano (pp), and pianissimo (pp). There are several accents and slurs. The score includes first and second endings, marked with '1' and '2' at the beginning. There are also section markers labeled 'A', 'B', and 'C'. A 'Clar. in E' part is indicated at measure 20. The page ends at measure 111.

Tchaikovsky — Symphony No. 4 in F Minor, Op. 36  
*Oboe 1*

II

Andantino in modo di canzona

*Solo*

*p semplice, ma grazioso*

9

18 20 *A* 1

47 1 1

60 *f ff dim.*

# Richard Strauss Don Juan, Op.20

## Oboe I.

*a tempo, ma tranquillo*  
**L** 3 Solo  
*p* sehr getragen und ausdrucksvoll

*M*  
*espr.*  
*cresc.* *dim.*

*pp* *molto espr.* *molto*

*dim. ppp* *espr.* *dim.*

*N* *molto tranq.* 4 *molto dim.* 3 *string.* 2 *a tempo*

*pp* *f* *ff*

5 4 *agitato* Solo *f*

*ff* *marcato* *ff* *ff*

*ff* *marc.*

*string.*

*a tempo, giocoso*

*p* 3 2 *pp* 3 2

*p* 3 *mf* *mf*

*p* *pp* 3 3 1

Maurice Ravel  
Le Tombeau de Couperin

HAUTBOIS et COR ANGLAIS

I. Prélude

(\*) Vif. ♩ = 92

HAUTBOIS

COR ANGLAIS  
(2<sup>d</sup> Hautbois)

1

COR A. *pp* *mp*

*p*

2

7

8

*f* Prenez le 2<sup>d</sup> HAUTB. 4 *pp*

9

4 Prenez le COR A.

# Schubert Symphony No.8

## II

### Oboe I

Andante con moto

54 *cresc.* *pp* 21 Klar. I *morend.* *pp*

90 *f* *p* *ppp* *ff* B

98

105

108 *f* C 7

Detailed description: This is a page of a musical score for Oboe I, measures 54 to 108. The music is in G major and 3/4 time. The tempo is 'Andante con moto'. The score consists of five staves. The first staff (measures 54-68) features a melodic line with dynamics *cresc.* and *pp*. A bracket groups measures 69-72, with 'Klar. I' and 'morend.' written above. The second staff (measures 69-84) has dynamics *f*, *p*, *ppp*, and *ff*, with a 'B' marking above measure 84. The third staff (measures 85-97) continues the melodic line. The fourth staff (measures 98-107) features a more rhythmic, eighth-note pattern. The fifth staff (measures 108-112) has a dynamic of *f* and a 'C' marking above measure 111, ending with a fermata and a '7' below.

# PULCINELLA SUITE

(Revised 1949 Version)

Oboe 1

IGOR STRAVINSKY

**8** *Larghetto*, ♩ = 54 - 56

